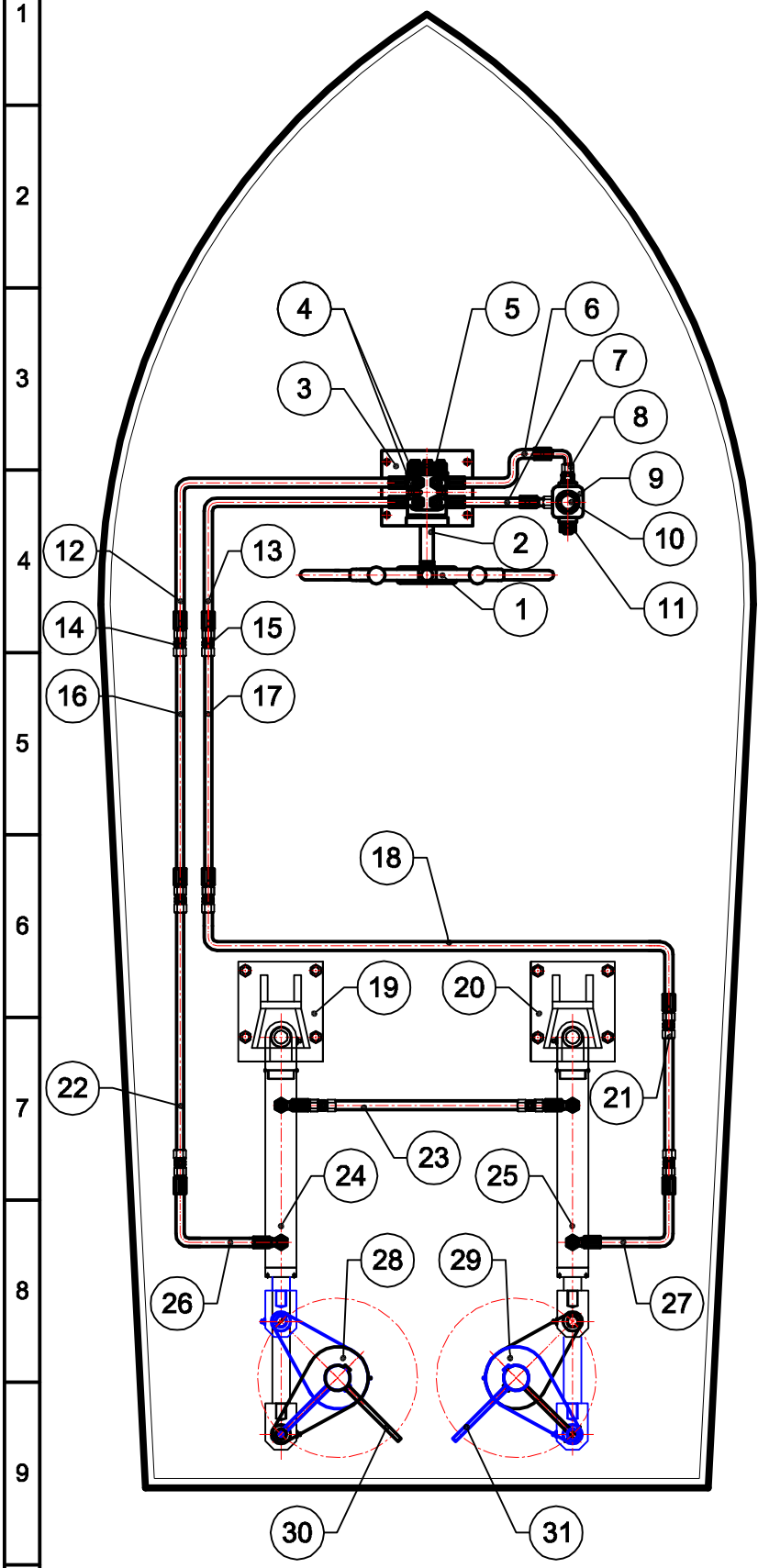



Schematic diagram of Twin Rudder without Connection Rod



1. Steering Wheel
2. Steering Column
3. Vertical Bracket
4. Hyd.Banjo Conn.16x1/2"
5. Helm Pump
6. Hose - 1
7. Hose - 2
8. Male Stud 16x1/2"
9. Oil Reservoir
10. Filler Breather
11. Oil Level Gauge
12. Hose - 3
13. Hose - 4
14. Std. Coupling 16mm.
15. Std. Coupling 16mm.
16. Seamless Steel Tube 16mm.
17. Seamless Steel Tube 16mm.
18. Seamless Steel Tube 16mm.
19. Rear End Bkt. (Customer Supply)
20. Rear End Bkt. (Customer Supply)
21. Seamless Steel Tube 16mm.
22. Seamless Steel Tube 16mm.
23. Hose - 5
24. JumboZ-500 IRS-Port
25. JumboZ-500 IRS-SB
26. Hose - 6
27. Hose - 7
28. Tiller Arm- 1 (Customer Supply)
29. Tiller Arm- 2 (Customer Supply)
30. Rudder Plate - 1 (Customer Supply)
31. Rudder Plate - 2 (Customer Supply)

	<b>MAC ♦ N ♦ HOM SYSTEMS</b> <b>KOCHI - 20</b>	DESIGNATION		DWG. No.	DATE		
		Schematic diagram of Twin Rudder without Connection Rod		MHS-660	17-10-18		
A	B	C	D	E	F	G	H